

2.1 Population growth and projections

Why is this important?

Population estimates, projections and trends have wide application in many aspects of modern society and are an important information tool for the evaluation of any region. Population data are particularly needed in the formulation of most government policies, especially those involving service delivery. A growing population indicates that a region is successfully attracting and retaining people.

At June 2001 the population of the Cradle Coast Region Tasmania was estimated to be 106,826 persons. Since 1991 the population has declined by 4.6%, or 5,141 persons. At June 2002 the population was estimated to have declined by a further 409 persons to 106,417. Much of the population decline in the Region is due to structural changes occurring in mining, manufacturing, forestry and energy infrastructure (hydro-electric) which has led to a net migration outflow.

The decline in population has generally occurred across most areas of the Region. The closely settled area in the north (Burnie–Devonport SSD), which contains around 73% of the Region's total population, declined by 1,836 persons (2.3%) between 1991 and 2001, while the north western rural area (North Western Rural SSD) declined by 4.6%. However, there was some population growth in both of these areas with the urban area and immediate surrounds of Latrobe LGA (Latrobe (M)–Part A), up 21.1% or 1,314 persons, and Kentish LGA up 6.2% or 323 persons.

On the West Coast the population decline has been the greatest, falling from 7,664 in 1991 to 5,516 in 2001. This represents a fall of 28.0%. At June 2002 the population of the West Coast municipality was estimated to have fallen a further 3.0% to 5,353 persons.

In comparison to the population decline in the Region, the population in Tasmania as a whole has increased marginally by 1.1% over the ten-year period from 1991 to 2001. Growth elsewhere in Tasmania, particularly in the Hobart area, has more than offset the decline in the Cradle Coast Region Tasmania.

- *At June 2002 the population of the Cradle Coast Region Tasmania was estimated to be 106,417 persons. In 1991 the population was almost 112,000.*
- *Most areas across the Region have declined in population over the last ten years or so. However, population growth has occurred in Kentish LGA and the urban area and immediate surrounds of Latrobe LGA.*

Section 2 ■ The People

2.1 Population growth and projections *continued*

2.1.1 Estimated Resident Population, SLAs, Cradle Coast Region Tasmania—1991, 1996, 2001 and 2002

SLA	ESTIMATED RESIDENT POPULATION AT 30 JUNE.....				CHANGE.....					
	1991 no.	1996 no.	2001 no.	2002 no.	1991 to 1996.....		1996 to 2001.....		1991 to 2001.....	
					no.	%	no.	%	no.	%
Burnie (C)–Part A	18 875	17 835	16 839	16 774	-1 040	-5.5	-996	-5.6	-2 036	-10.8
Central Coast (M)–Part A	17 835	18 062	17 806	17 739	227	1.3	-256	-1.4	-29	-0.2
Devonport (C)	25 211	24 935	24 257	24 207	-276	-1.1	-678	-2.7	-954	-3.8
Latrobe (M)–Part A	6 223	7 132	7 537	7 646	909	14.6	405	5.7	1 314	21.1
Waratah/Wynyard (M)–Part A	11 172	11 211	11 041	11 019	39	0.3	-170	-1.5	-131	-1.2
<i>Burnie–Devonport SSD</i>	79 316	79 175	77 480	77 385	-141	-0.2	-1 695	-2.1	-1 836	-2.3
Burnie (C)–Part B	2 196	2 142	2 047	2 057	-54	-2.5	-95	-4.4	-149	-6.8
Central Coast (M)–Part B	3 300	3 289	3 223	3 179	-11	-0.3	-66	-2.0	-77	-2.3
Circular Head (M)	8 530	8 450	8 047	8 001	-80	-0.9	-403	-4.8	-483	-5.7
Kentish (M)	5 176	5 462	5 499	5 501	286	5.5	37	0.7	323	6.2
King Island (M)	1 917	1 879	1 724	1 689	-38	-2.0	-155	-8.2	-193	-10.1
Latrobe (M)–Part B	701	669	704	703	-32	-4.6	35	5.2	3	0.4
Waratah/Wynyard (M)–Part B	3 167	2 792	2 586	2 549	-375	-11.8	-206	-7.4	-581	-18.3
<i>North Western Rural SSD</i>	24 987	24 683	23 830	23 679	-304	-1.2	-853	-3.5	-1 157	-4.6
West Coast (M)	7 664	6 351	5 516	5 353	-1 313	-17.1	-835	-13.1	-2 148	-28.0
<i>Lyell SSD</i>	7 664	6 351	5 516	5 353	-1 313	-17.1	-835	-13.1	-2 148	-28.0
Cradle Coast Region Tasmania	111 967	110 209	106 826	106 417	-1 758	-1.6	-3 383	-3.1	-5 141	-4.6
Tasmania	466 802	474 443	471 795	472 725	7 641	1.6	-2 648	-0.6	4 993	1.1

Source: ABS, *Regional Population Growth* (cat. no. 3218.0).

2.1 Population growth and projections *continued*

Table 2.1.2 shows the projected population for the Cradle Coast Region Tasmania to the year 2016. Recent population declines in the Region are expected to continue, with the total population in 2016 projected to be around 99,100 persons. This is equivalent to a decline of 7.2% (7,700 persons) over the period 2001–2016. However, during the same period, the population of Tasmania is also projected to decline (by 4.2%), with the result that the Region's share of the total state population in 2016 is expected to be approximately the same as in 2001 (22.6%). Small declines in population are expected to occur in most LGAs in the Region, although a number of areas in the North Western Rural SSD are projected to remain relatively stable. The populations of the LGA of Devonport and the urban areas of the LGA of Burnie (Burnie (C)–Part A) are both projected to decline between 2001 and 2016, by 2,953 persons (12.2%) and 1,996 persons (11.9%) respectively. By contrast the population in the urban areas of Latrobe LGA (Latrobe (M)–Part A) is projected to increase slightly (by 8.3%) over the same period. Kentish LGA is also projected to increase slightly.

It should be noted that ABS projections are not intended as predictions or forecasts, but are illustrations of growth and change in the population which would occur if certain assumptions about future demographic trends prevail over the projection period.

While assumptions for the projections are formulated on the basis of an assessment of past demographic trends, there is no certainty that any of the assumptions will be realised. In addition, no assessment has been made of changes in non-demographic conditions (e.g. state and local government policy decisions, economic factors). More detailed information about the methods applied and the assumptions used can be obtained from the ABS on request.

These projections were formulated in 1999. A new set of projections are expected to become available in early 2004 which will take into account the 2001 Census results and demographic trends since 1999.

2.1.2 Projected Population Growth, SLAs, Cradle Coast Region Tasmania—2006 to 2016

SLA	2006	2011	2016
Burnie (C)–Part A	16 453	15 703	14 843
Central Coast (M)–Part A	17 484	17 077	16 542
Devonport (C)	23 404	22 447	21 304
Latrobe (M)–Part A	7 711	7 953	8 164
Waratah/Wynyard (M)–Part A	10 754	10 414	10 035
<i>Burnie–Devonport SSD</i>	75 806	73 594	70 888
Burnie (C)–Part B	1 914	1 818	1 718
Central Coast (M)–Part B	3 031	2 908	2 782
Circular Head (M)	8 475	8 397	8 324
Kentish (M)	5 632	5 698	5 726
King Island (M)	1 684	1 597	1 488
Latrobe (M)–Part B	677	675	681
Waratah/Wynyard (M)–Part B	2 649	2 560	2 471
<i>North Western Rural SSD</i>	24 062	23 653	23 190
West Coast (M)	5 423	5 231	5 027
<i>Lyell SSD</i>	5 423	5 231	5 027
Cradle Coast Region Tasmania	105 291	102 478	99 105

Source: ABS, Population Projections, (based on DHA assumptions), data available on request.

- *It is projected that the population of the Region will be around 99,100 persons in the year 2016.*

2.1 Population growth and projections *continued*

Table 2.1.3 shows the populations of the urban centres and localities in the Region over the last four Censuses. The populations are census night counts and therefore include any visitors to the Region and exclude any usual residents that may have been away on census night.

The most populated centres are Devonport (21,575 persons) and Burnie–Somerset (18,095 persons), both of which are located on the North West Coast (Burnie–Devonport SSD). In the north west rural area (North Western Rural SSD) the most populated town is Smithton (3,149 persons), centre for the North West's agricultural and forestry operations. Queenstown (2,352 persons) and Rosebery (1,115 persons) are the most populated centres on the West Coast. The population decline occurring across most areas of the Region is reflected by the population decline in each of these towns. Between 1996 and 2001 there was a population decline of 3.2% in Devonport, 5.4% in Burnie–Somerset and 5.0% in Smithton. During this same period the population declined by 10.6% in Queenstown and 22.5% in Rosebery.

The population of Tullah was 1,117 in 1986 and by 2001 had fallen to 250. The height of the construction phase of major hydro-electric projects, with headquarters and workers' living quarters based in Tullah, was in 1986. Work on these projects—the Pieman River Power Development and the Anthony Power Development—was completed by the early 1990s.

Similarly, the population of remote Savage River has also declined dramatically, from 1,058 in 1986 to 123 in 2001. In 1986, workers in the Savage River Mines lived with their families or in single men's quarters in the Savage River township. In more recent times, mine workers now commute to the mine from their homes on the north west coast and other parts of the Region.

2.1.3 Population Counts, Urban Centres and Localities, Cradle Coast Region Tasmania—1986 to 2001 Censuses

	1986	1991	1996	2001	Population change 1996 to 2001
	no.	no.	no.	no.	%
Burnie–Devonport SSD					
Burnie–Somerset	20 665	20 505	19 134	18 095	-5.4
Devonport	22 645	22 660	22 299	21 575	-3.2
Forth	288	314	342	347	1.5
Gawler	233	204	271	248	-8.5
Heybridge	396	370	341	324	-5.0
Latrobe	2 578	2 551	2 765	2 690	-2.7
Leith	132	164	185	213	15.1
Penguin	2 801	2 876	3 030	2 910	-4.0
Port Sorell	1 173	1 494	1 818	1 937	6.5
Sisters Beach	158	241	277	278	0.4
Sulphur Creek	331	321	319	350	9.7
Turners Beach	900	905	1 184	1 259	6.3
Ulverstone	10 055	9 923	9 792	9 515	-2.8
Wynyard	4 705	4 679	4 509	4 635	2.8
North Western Rural SSD					
Currie	794	819	841	793	-5.7
Railton	906	996	878	862	-1.8
Ridgley	427	452	427	435	1.9
Savage River	1 058	540	158	123	-22.2
Sheffield	934	992	1 016	982	-3.3
Smithton	3 414	3 495	3 313	3 149	-5.0
Stanley	588	576	543	463	-14.7
Waratah	334	360	230	246	7.0
Lyell SSD					
Queenstown	3 593	3 368	2 631	2 352	-10.6
Rosebery	2 102	1 637	1 439	1 115	-22.5
Strahan	516	597	701	758	8.1
Tullah	1 117	718	268	250	-6.7
Zeehan	1 610	1 132	1 116	892	-20.1

Source: ABS, 1986 to 2001 Censuses.

2.2 Components of population change

Why is this important?

The population growth or decline of a region is determined by a mix of two factors; natural increase (i.e. births less deaths) and net migration (i.e. the net inflow or outflow of residents). There can be considerable variation in the way each of these factors perform between regions and also over time.

Table 2.2.1 shows that over the last five years the estimated resident population of the Region has been declining. However, the rate of decline has slowed somewhat in more recent periods, from 0.8% between 1996–97 and 1997–98 to around 0.4% between 2000–01 and 2001–02. This has occurred primarily as a consequence of changes in the level of net migration outflows.

An examination of 2001 Census data indicates that, of those who moved out of the Region between 1996 and 2001, 39% went to other parts of Tasmania and 61% went to mainland Australia, particularly to Victoria (18%), Queensland (16%) and New South Wales (11%).

2.2.1 Components of Population Change, Cradle Coast Region Tasmania—1996–97 to 2001–02

	1996–97	1997–98	1998–99	1999–00	2000–01	2001–02
Births	1 562	1 438	1 422	1 371	1 652	1 290
Deaths	851	857	804	799	904	856
Natural increase(a)	711	581	618	572	748	434
Net migration(b)	-1 511	-1 483	-1 327	-1 048	-1 244	-843
Total population change(c)	-800	-902	-709	-476	-496	-409
Estimated resident population (at June)	109 409	108 507	107 798	107 322	106 826	106 417

(a) Excess of births over deaths.

(b) Net inflow or outflow of usual residents to a region; i.e. people changing their place of usual residence.

(c) The difference in population from one period to the next.

Source: ABS, Demography, data available on request, and ABS, *Regional Population Growth* (cat. no. 3218.0).

- *Of those persons who left the Region between 1996 and 2001, 39% went to other parts of Tasmania and 61% went to mainland Australia.*

2.3 Age structure

Why is this important?

The age structure of the population is of importance in the planning of infrastructure and services, such as schools and health services. Together with fertility rates, it also has implications for the future growth or decline of the population.

Overall, the Cradle Coast Region Tasmania has a very similar age profile to Tasmania, but a slightly older age profile than Australia as a whole. At June 2001, 13.8% of both the state's and the Region's total population were aged 65 years and over compared with 12.6% for Australia.

The Region does contain a slightly higher proportion of young children (persons aged 0–14) than the state, at 21.9% compared with 21.0%, however, there are fewer in the 15–29 year age group (18.0% compared with 19.3%).

For the working age population, i.e. persons aged 15–64, 64.3% of the Region's population were in this age group compared with 65.2% for Tasmania and 66.9% for Australia.

At June 2001 the proportion of males (49.5%) to females (50.5%) was similar to that for the state (49.3% and 50.7% respectively).

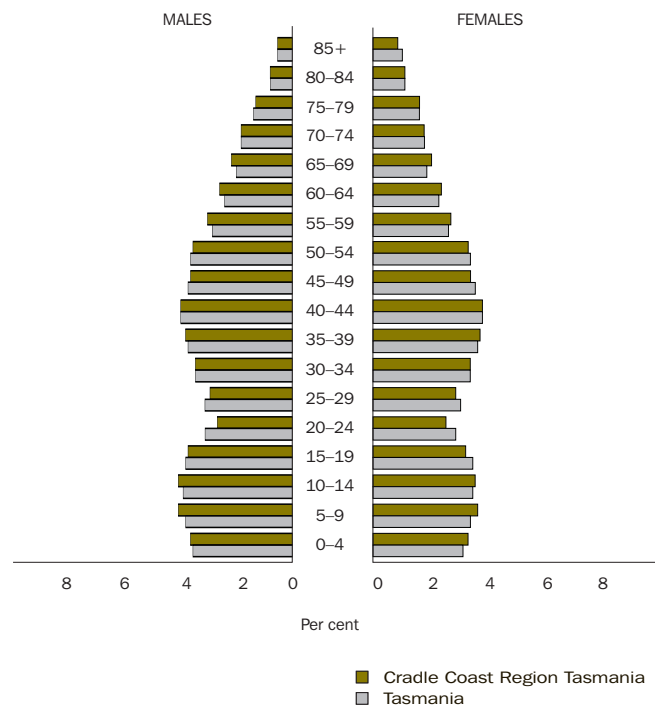
2.3.1 Age Structure, Cradle Coast Region Tasmania—June 2001

Age group (years)	Males	Females	Persons.....	
	no.	no.	no.	%
0–4	3 689	3 584	7 273	6.8
5–9	4 144	3 977	8 121	7.6
10–14	4 137	3 906	8 043	7.5
15–19	3 837	3 566	7 403	6.9
20–24	2 763	2 771	5 534	5.2
25–29	3 051	3 195	6 246	5.8
30–34	3 508	3 738	7 246	6.8
35–39	3 918	4 048	7 966	7.5
40–44	4 059	4 159	8 218	7.7
45–49	3 740	3 717	7 457	7.0
50–54	3 663	3 609	7 272	6.8
55–59	3 068	2 957	6 025	5.6
60–64	2 695	2 585	5 280	4.9
65–69	2 176	2 210	4 386	4.1
70–74	1 851	1 972	3 823	3.6
75–79	1 335	1 773	3 108	2.9
80–84	763	1 217	1 980	1.9
85 and over	474	971	1 445	1.4
Total	52 871	53 955	106 826	100.0

Source: ABS, *Population by Age and Sex, Tasmania—Electronic Delivery, June 2001* (cat. no. 3235.6.55.001).

2.3.2 Age Structure, Cradle Coast Region Tasmania Compared with Tasmania—June 2001

(Percentage of age group as proportion of total persons)



Source: ABS, *Population by Age and Sex, Tasmania—Electronic Delivery, June 2001* (cat. no. 3235.6.55.001).

2.3 Age structure *continued*

The slightly older age profile in the Region than that for Australia is also highlighted when looking at the median age, which divides the age distribution into two groups, with half the population falling above the median and half below it. The median age for the Cradle Coast Region Tasmania at June 2001 was 37.3 years, compared with a median age of 37.2 years for Tasmania and 35.7 years for Australia.

The West Coast municipality (Lyell SSD) had the youngest age profile in the Region, with a median of 33.4 years at June 2001. The oldest median age was in Burnie–Devonport SSD, with 38.2 years. Medians in this subdivision ranged from 36.3 years in Burnie (C)–Part A to 39.6 years in Central Coast (M)–Part A. The median age in the north west rural area (North Western Rural SSD) was 35.7 years, ranging from 34.7 years in Latrobe (M)–Part B to 39.2 years for people on King Island (M).

Between 1996 and 2001 the median age in the Region increased by 8.4%, which was greater than the increase for Tasmania (7.5%) and Australia (5.0%). Within the Region the greatest percentage increase occurred in the West Coast municipality (Lyell SSD) where it increased from 30.4 to 33.4 years, an increase of 9.9%. In both Burnie–Devonport SSD and North Western Rural SSD the median age increased by 8.5%. At the LGA level the greatest percentage increase occurred in King Island, where the median age increased by 13.0% between June 1996 and 2001.

2.3.3 Median Age, SLAs, Cradle Coast Region Tasmania— At June 1996 and 2001

	1996 years	2001 years
Burnie (C)–Part A	33.6	36.3
Central Coast (M)–Part A	36.0	39.6
Devonport (C)	35.4	38.3
Latrobe (M)–Part A	36.4	39.4
Waratah/Wynyard (M)–Part A	35.0	38.3
<i>Burnie–Devonport SSD</i>	35.2	38.2
Burnie (C)–Part B	32.7	35.3
Central Coast (M)–Part B	32.7	34.9
Circular Head (M)	32.2	35.0
Kentish (M)	34.1	36.6
King Island (M)	34.7	39.2
Latrobe (M)–Part B	33.6	34.7
Waratah/Wynyard (M)–Part B	32.4	34.6
<i>North Western Rural SSD</i>	32.9	35.7
West Coast (M)	30.4	33.4
<i>Lyell SSD</i>	30.4	33.4
Cradle Coast Region Tasmania	34.4	37.3
Tasmania	34.6	37.2
Australia	34.0	35.7

Source: ABS, Estimated Resident Population by Age (Single Years), data available on request.

EXPLANATORY NOTE — POPULATION DATA

Throughout this Profile two main sources of population data have been used—*Estimated Resident Population (ERP)* and *Usual Residence Counts from the Population Census*. It is important to note that these data differ.

The ERP is the official ABS population figure. It is based on the Population Census usual residence count and is adjusted for net census undercount and for the number of usual residents who were temporarily overseas at the time of the census. Net census undercount is the number of people estimated to have been missed in the census.

There are two population counts available from the Population Census—*Place of Enumeration* (where people were counted on census night) and *Place of Usual Residence* (where people usually live).

The Place of Enumeration count is the count of every person who spent census night in Australia. People are counted at the location where they were on the night, which may not be where they usually live. It also includes visitors from overseas. The Place of Usual Residence count is based on where people usually live or their usual address. Usual address is that address at which the person lived or intended to live for a total of 6 months or more in the census year.

In this Profile Estimated Resident Population data has been used for the total population figure for an area as well as for presenting the age distribution. For other characteristics of the population Usual Residence Counts from the Census have been used. These include characteristics such as Indigenous Status, Birthplace, Industry and Computer Use, etc. The different sources used are the best sources of data available for the selected data items and characteristics presented as they provide a truer reflection of the people living in an area. Table headings and/or footnotes refer to the sources used.

Please note also that the 1996 and 2001 Census Basic Community Profiles, which are freely available from the ABS web site, are based on Place of Enumeration and will differ from the data presented in this Profile.

2.4 Other selected characteristics

Why is this important?

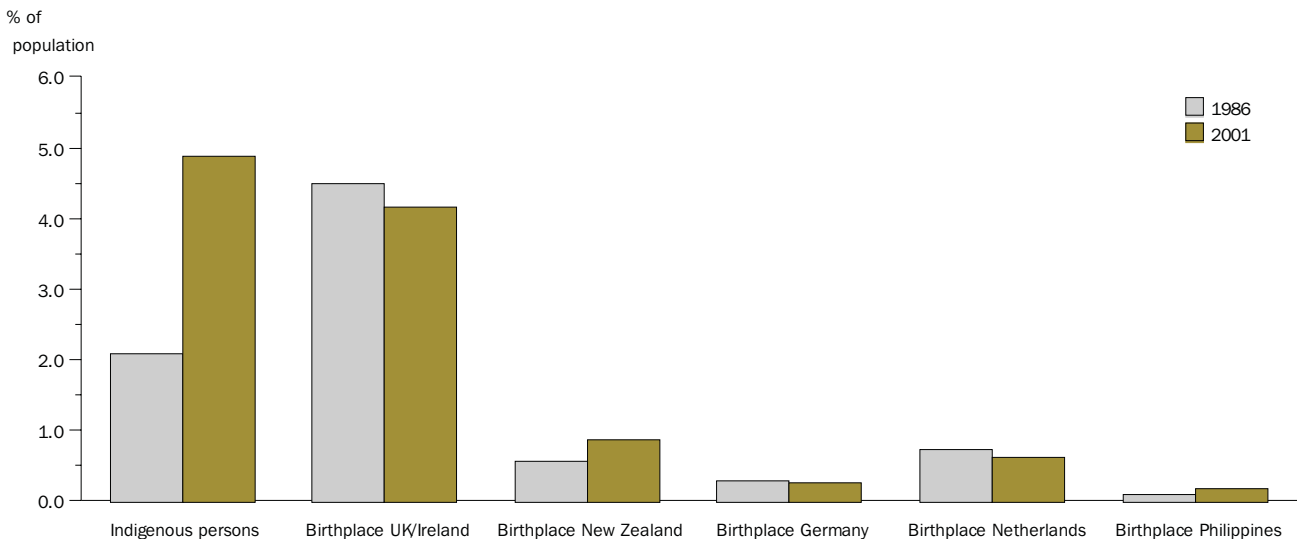
The Population Census, undertaken by the ABS every five years, enables users to examine in considerable detail topics such as 'Birthplace' and the 'Indigenous Population' for any small area or region. This information helps in understanding the 'fabric' or complexion of a region and how it may change over time and can be used to examine the need for health, education, employment and other social services for migrant groups and the Indigenous population.

The Indigenous population in the Cradle Coast Region Tasmania has increased from 2,232 persons (2.1% of the total population) in 1986 to 5,079 persons (4.9%) in 2001. In 2001, the Region had a higher proportion of Indigenous persons than both Tasmania (3.4%) and Australia (2.2%).

It is important to note that the Population Census question on Indigenous status relies largely on self-identification by the person or persons completing the census form. Across Australia, an increased propensity to identify as Indigenous has been observed in recent Population Censuses. Consequently, this factor may contribute to some of the growth in the Indigenous population between 1986 and 2001.

Over the past 15 years the number and proportion of persons in the Cradle Coast Region Tasmania born overseas has remained relatively steady, at 8,282 persons (or 7.7% of the total population) in 1986 and 8,032 persons (7.7%) in 2001. Persons born in the United Kingdom/Ireland, New Zealand, Netherlands, Germany and Philippines make up the largest groups of overseas-born people. While persons born in the United Kingdom/Ireland continue to make up the largest proportion of overseas-born persons, the number of persons in this group has decreased slightly over the last 15 years, from 4,797 persons (4.5%) in 1986 to 4,319 (4.1%) in 2001. Conversely, the number of persons born in New Zealand has increased, from 611 persons (0.6%) in 1986 to 903 persons (0.9%) in 2001.

2.4.1 Selected Characteristics as a Percentage of Total Population, Cradle Coast Region Tasmania—1986 and 2001 Censuses



Source: ABS, 1986 and 2001 Censuses.

2.4 Other selected characteristics *continued*

2.4.2 Selected Characteristics, Usual Residents, Cradle Coast Region Tasmania—1986 to 2001 Censuses

Characteristic	1986.....		1991.....		1996.....		2001.....	
	no.	%	no.	%	no.	%	no.	%
Indigenous persons	2 232	2.1	2 939	2.7	4 487	4.2	5 079	4.9
<i>Total Australian-born(a)</i>	97 565	91.3	96 785	90.1	95 088	88.4	90 235	86.8
Born overseas								
United Kingdom and Ireland	4 797	4.5	4 724	4.4	4 684	4.4	4 319	4.2
New Zealand	611	0.6	727	0.7	922	0.9	903	0.9
Germany	316	0.3	283	0.3	315	0.3	283	0.3
Netherlands	782	0.7	755	0.7	692	0.6	641	0.6
Philippines	116	0.1	150	0.1	170	0.2	193	0.2
Other countries	1 660	1.6	1 826	1.7	1 698	1.6	1 693	1.6
<i>Total overseas-born</i>	8 282	7.7	8 465	7.9	8 481	7.9	8 032	7.7
Birthplace not stated	1 052	1.0	2 131	2.0	4 045	3.8	5 635	5.4
Total persons	106 899	—	107 381	—	107 614	—	103 902	—

(a) Also includes Indigenous persons.

Source: ABS, 1986 to 2001 Censuses.

- *At the 2001 Census there were 5,079 Indigenous persons living in the Cradle Coast Region Tasmania. This was equivalent to 4.9% of the total number of people in the Region.*

2.4 Other selected characteristics *continued*

Indigenous population

Why is this important?

Statistics on Aboriginal and Torres Strait Islander (Indigenous) people are vital for determining their number and distribution throughout Australia. The information is useful to Indigenous organisations and communities, government agencies and policy makers to support strategic planning and development in areas such as health, education, employment and housing.

As is the case with the total population as a whole, the majority (70.6%) of the Indigenous population in the Cradle Coast Region Tasmania in 2001 were located in the north of the Region (Burnie–Devonport SSD). The SLA of Central Coast (M)–Part A had the highest number of Indigenous persons, with 957 persons (18.8% of the total Indigenous population in the Region). This was followed by Devonport (C) SLA with 901 persons (17.7%) and Burnie (C)–Part A with 733 persons (14.4%). SLAs with the highest proportion of Indigenous people were Circular Head (7.3% of the total SLA population) and Waratah/Wynyard (M)–Part A (6.1%).

2.4.3 Indigenous Status, SLAs, Cradle Coast Region Tasmania—2001 Census

SLA	Indigenous no.	Other(a) no.	Total usual residents no.	Proportion Indigenous %
Burnie (C)–Part A	733	15 628	16 361	4.5
Central Coast (M)–Part A	957	16 329	17 286	5.5
Devonport (C)	901	22 621	23 522	3.8
Latrobe (M)–Part A	347	6 975	7 322	4.7
Waratah/Wynyard (M)–Part A	648	10 045	10 693	6.1
<i>Burnie–Devonport SSD</i>	<i>3 586</i>	<i>71 598</i>	<i>75 184</i>	<i>4.8</i>
Burnie (C)–Part B	53	1 960	2 013	2.6
Central Coast (M)–Part B	152	3 022	3 174	4.8
Circular Head	571	7 252	7 823	7.3
Kentish (M)	212	5 176	5 388	3.9
King Island (M)	34	1 649	1 683	2.0
Latrobe (M)–Part B	33	662	695	4.7
Waratah/Wynyard (M)–Part B	143	2 407	2 550	5.6
<i>North Western Rural SSD</i>	<i>1 198</i>	<i>22 128</i>	<i>23 326</i>	<i>5.1</i>
West Coast (M)	295	5 098	5 393	5.5
<i>Lyell SSD</i>	<i>295</i>	<i>5 098</i>	<i>5 393</i>	<i>5.5</i>
Cradle Coast Region Tasmania	5 079	98 824	103 902	4.9

(a) Includes Indigenous status 'Not stated'.

Source: ABS, 2001 Census.

- *In 2001 the LGAs of Circular Head, Waratah/Wynyard, Central Coast and West Coast had higher representation of Indigenous Australians (than the regional average).*

2.4 Other selected characteristics *continued*

Indigenous population *continued*

Table 2.4.4 shows the Indigenous status of the population in the main urban centres and towns of the Region. At the 2001 Census, the town of Smithton had the highest proportion of Indigenous persons (9.4% of the total population of the town). Other towns with relatively high proportions of Indigenous persons included Wynyard (7.4%) and Rosebery (6.7%).

In the Region's two largest urban centres, Devonport had 837 Indigenous persons (3.9% of the total population) and Burnie–Somerset had 868 (4.8%).

**2.4.4 Indigenous Status, Main Urban Centres, Cradle Coast Region Tasmania—
2001 Census**

	<i>Indigenous</i> no.	<i>Other(a)</i> no.	<i>Total</i> no.	<i>Proportion Indigenous</i> %
Burnie–Somerset	868	17 227	18 095	4.8
Devonport	837	20 738	21 575	3.9
Latrobe	165	2 524	2 689	6.1
Penguin	184	2 727	2 911	6.3
Port Sorell	63	1 873	1 936	3.3
Queenstown	109	2 243	2 352	4.6
Rosebery	75	1 040	1 115	6.7
Sheffield	38	943	981	3.9
Smithton	295	2 853	3 148	9.4
Turners Beach	73	1 186	1 259	5.8
Ulverstone	555	8 960	9 515	5.8
Wynyard	343	4 292	4 635	7.4

(a) Includes 'Not stated'.

Source: ABS, 2001 Census.

2.4 Other selected characteristics *continued*

Indigenous population *continued*

Table 2.4.5 and graph 2.4.6 compare the age structure of the Indigenous population in the Cradle Coast Region Tasmania with that of the non-Indigenous population. This shows that the Indigenous population is significantly younger than the non-Indigenous population. In 2001, around half (50%) of the Indigenous population was under 20 years of age, while the equivalent figure for the non-Indigenous population was around 28%. By contrast, less than 5% of the Indigenous population were aged 60 years or over, compared with almost 20% of the non-Indigenous population. Patterns similar to these have been observed in many other regions of Australia and are generally indicative of relatively high fertility rates amongst Indigenous people, combined with historically lower life expectancies.

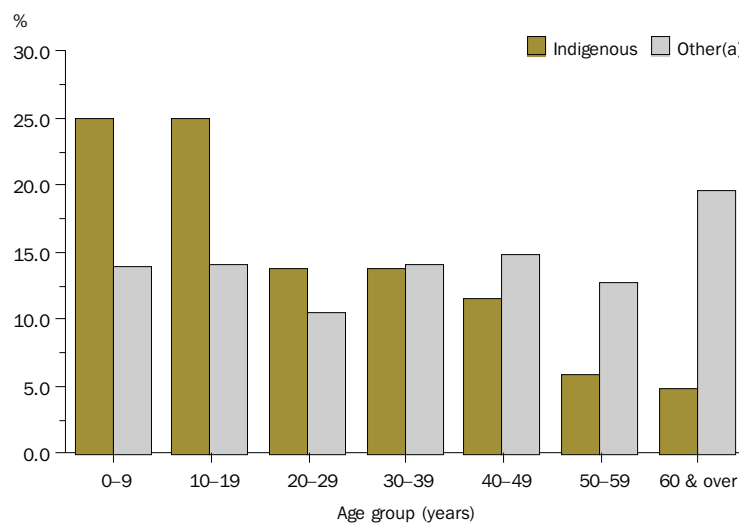
2.4.5 Indigenous Status by Age, Cradle Coast Region Tasmania—2001 Census

Age group (years)	Indigenous.....		Other(a).....	
	no.	%	no.	%
0–9	1 270	25.0	13 789	14.0
10–19	1 273	25.1	13 886	14.1
20–29	704	13.9	10 454	10.6
30–39	699	13.8	13 979	14.1
40–49	589	11.6	14 739	14.9
50–59	301	5.9	12 628	12.8
60 and over	243	4.8	19 349	19.6
Total	5 079	100.0	98 824	100.0

(a) Includes Indigenous status 'Not stated'.

Source: ABS, 2001 Census.

2.4.6 Indigenous Status by Age, Cradle Coast Region Tasmania—2001 Census



(a) Includes Indigenous status 'Not stated'.

Source: ABS, 2001 Census.

2.5 Household and family structure

Why is this important?

The family unit and its characteristics can be regarded as central to the wellbeing or otherwise of communities. Over time family and household structures have changed which to some extent shows the change in values and lifestyles in our society. Social commentators sometimes focus on the proportion of one-parent families as an indicator of changing circumstances. More recently, the increase of lone person households in Australia has emerged as a social trend of interest, which places demands, amongst other things, on housing availability.

In 2001 around 72% of households in the Cradle Coast Region Tasmania were occupied by families, while 26% were occupied by persons living alone. This is similar to the proportions for Tasmania as a whole. Between 1991 and 2001, the number of persons in the Region living alone increased by 38%, from around 7,500 persons to around 10,400 persons. As a proportion of all households, this represents an increase from 20.1% in 1991 to 26.2% in 2001.

Almost 60% of all families in the Region in 2001 were families with children which is again similar to the proportion for Tasmania. Couple only families made up 39.7% of all families in the Region.

The number of two parent families in the Region fell by 20% between 1991 and 2001. As a proportion of all families in the Region this represented a decline from 53.4% in 1991 to 43.9% in 2001. Conversely, the number of 'couple only' families has increased. Included in this category are young couples without children and also older couples where children have grown up and left home.

2.5.1 Household Type(a), Cradle Coast Region Tasmania—1991, 1996 and 2001 Censuses

Household type	1991.....		1996.....		2001.....	
	no.	%	no.	%	no.	%
Lone persons households	7 529	20.1	9 278	23.6	10 357	26.2
Group households	823	2.2	856	2.2	795	2.0
Family households	29 160	77.7	29 185	74.2	28 376	71.8
Total households	37 512	100.0	39 319	100.0	39 528	100.0

(a) Excludes households that could not be classified to a particular type. Excludes households occupied by visitors only.

Source: ABS, 1991, 1996 and 2001 Censuses.

2.5.2 Family Type, Cradle Coast Region Tasmania—1991, 1996 and 2001 Censuses

Family type	1991.....		1996.....		2001.....	
	no.	%	no.	%	no.	%
One parent families	3 661	12.5	4 000	13.6	4 366	15.3
Couple only families	9 634	32.9	10 689	36.4	11 310	39.7
Two parent families	15 654	53.4	14 334	48.9	12 534	43.9
Other families	342	1.2	319	1.1	310	1.1
Total families	29 291	100.0	29 342	100.0	28 520	100.0

Source: ABS, 1991, 1996 and 2001 Censuses.

- *In 2001, over a quarter of households in the Region were occupied by persons living alone. As a proportion of all households, the number of persons living alone has increased from 20% in 1991 to 26% in 2001.*

2.6 Home ownership

Why is this important?

Data on home ownership is important to monitor such issues as housing and income security and mobility. Home ownership can provide greater security of tenure, improved lifestyle and an investment for the future. In broad terms, the existence of a high proportion of home ownership in a region may be seen as contributing to a sense of community and commitment. Conversely, an area with a high proportion of public sector rental housing may often be associated with relative socio-economic disadvantage, particularly if located in a large metropolitan area.

At the 2001 Census, the majority of occupied private dwellings (71.9%) in the Cradle Coast Region Tasmania were either owned outright or being purchased. By contrast, just under one-quarter (23.7%) were being rented. In both cases, these figures are close to those observed across the whole of Tasmania. The national level of home ownership (i.e. owned outright or being purchased) measured by the 2001 Census was 68.5% of all occupied private dwellings.

Dwellings rented from Housing Tasmania (the Tasmanian housing authority) comprised 30.0% of occupied rental properties and 7.1% of the total stock of occupied private dwellings in the Region. There is slightly greater representation of occupied Housing Tasmania properties in the Region than across the state as a whole. Occupied dwellings rented from Housing Tasmania made up 26.9% of all occupied rental properties in Tasmania and 6.5% of the total occupied housing stock.

Over the ten-year period from 1991 to 2001, the proportion of dwellings in the Region either owned outright or being purchased has risen slightly from 70.1% to 71.9%. During the same period there has been a small decline in the proportion of dwellings being rented (from 24.7% to 23.7% of the total occupied dwelling stock). Table 2.6.1 and graph 2.6.2 show that there has been a gradual shift in the structure of the rental market in the Region between 1991 and 2001. The number of occupied dwellings rented from Housing Tasmania fell by around 10% during the period, while the number of occupied dwellings rented from other landlords rose by a similar margin. As a result Housing Tasmania's 'share' of occupied rental housing in the Region fell from 34.5% in 1991 to 30.0% in 2001. However, as previously noted, this is still a little above the rate observed across the state as a whole.

Despite the change in the structure of the rental market between 1991 and 2001, it can be seen that overall patterns of housing tenure in the Cradle Coast Region Tasmania have not altered significantly despite the growth in lone person households and one parent families during the same period (as described in Section 2.5).

**2.6.1 Housing Tenure, Occupied Private Dwellings(a), Cradle Coast Region Tasmania—
1991, 1996 and 2001 Censuses**

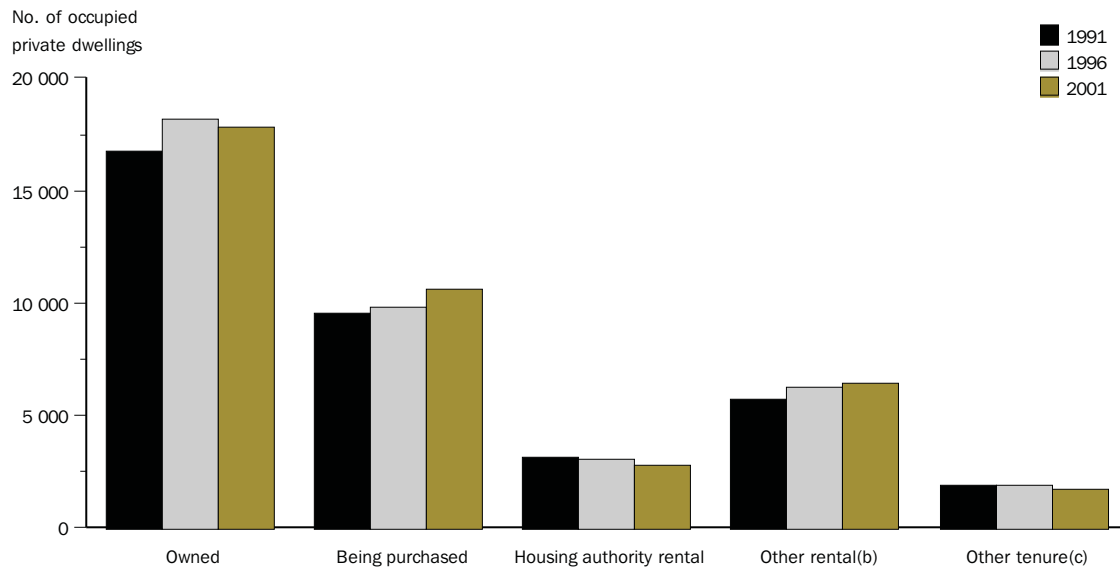
Housing tenure type	1991.....		1996.....		2001.....	
	no.	%	no.	%	no.	%
Owned	16 736	44.6	18 189	46.3	17 810	45.1
Being purchased	9 551	25.5	9 813	25.0	10 589	26.8
Rented:						
Housing authority	3 198	8.5	3 054	7.8	2 808	7.1
Other	5 775	15.4	6 281	16.0	6 434	16.3
Rent type not stated	297	0.8	85	0.2	120	0.3
Total rented	9 270	24.7	9 420	24.0	9 362	23.7
Other (incl. not stated)	1 955	5.2	1 897	4.8	1 767	4.5
Total	37 512	100.0	39 319	100.0	39 528	100.0

(a) Excludes dwellings occupied by visitors only and households that could not be classified to a particular household type.

Source: ABS, 1991, 1996 and 2001 Censuses.

2.6 Home ownership *continued*

2.6.2 Housing Tenure(a), Occupied Private Dwellings, Cradle Coast Region Tasmania—1991, 1996 and 2001 Censuses



(a) Excludes dwellings occupied by visitors only and households that could not be classified to a particular household type.

(b) Includes rental type not stated.

(c) Includes tenure not stated.

Source: ABS, 1991, 1996 and 2001 Censuses.

- *Approximately 72% of occupied dwellings in the Region are owned outright or being purchased. The equivalent figure for Australia as a whole is 68.5%.*

2.7 Income

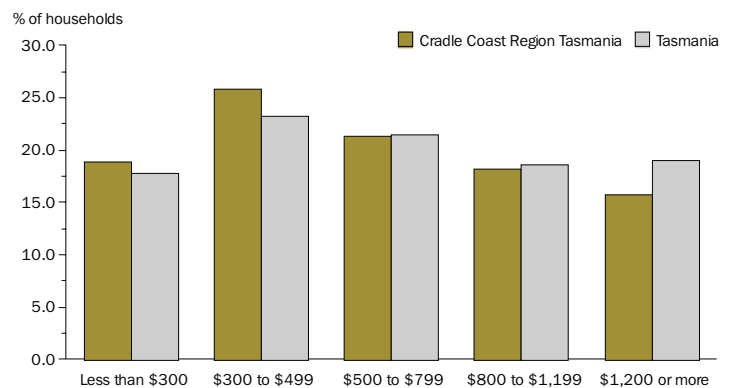
Why is this important?

Income and income distribution are indicators of the relative economic health or otherwise of the residents of an area. In conjunction with other topics, such as unemployment, qualifications of employed persons and income support, they provide information on the main economic or financial resources available to households or individuals to support their standard of living. Two perspectives are presented below—household income distribution from the 2001 Census and average taxable income from the Australian Taxation Office (ATO).

Graph 2.7.1 compares the household income distribution of the Cradle Coast Region Tasmania with Tasmania as a whole as at the 2001 Census. In comparison with Tasmania more households in the Region had incomes less than \$500 per week (44.7% compared with 40.9%). Fewer households in the Region earned \$1,200 or more per week than in Tasmania (15.7% compared with 19.0%).

The Lyell SSD (or West Coast (M)) had the highest proportion of households with incomes of both \$1,200 or more per week (23.0%) and \$800 to \$1,199 per week (22.1%). These proportions were higher than those in Tasmania (19.0% and 18.6% respectively). Higher incomes in Lyell SSD are largely attributable to the higher wages paid to persons employed in the area’s mining industry. In contrast the Burnie–Devonport SSD had the highest proportion of households with incomes less than \$300 per week (19.7%) and \$300 to \$499 per week (26.6%). This compares with 17.7% of Tasmanian households with an income of less than \$300 per week and 23.2% with an income of \$300 to \$499 per week.

2.7.1 Weekly Household Income Distribution, Occupied Private Dwellings(a)(b), Cradle Coast Region Tasmania—2001 Census



- (a) Excludes households occupied by visitors only and households that could not be classified to a particular household type.
- (b) Excludes all households where one or more persons aged 15 years or more did not state their income or were temporarily absent.

Source: ABS, 2001 Census.

2.7.2 Weekly Household Income Distribution, Occupied Private Dwellings(a)(b), SSDs, Cradle Coast Region Tasmania—2001 Census

Weekly household income	Burnie–Devonport SSD.....		North Western Rural SSD.....		Lyell SSD.....		Cradle Coast Region Tasmania...		Tasmania.....	
	no.	%	no.	%	no.	%	no.	%	no.	%
Less than \$300	5 144	19.7	1 161	15.9	344	18.3	6 649	18.9	27 914	17.7
\$300 to \$499	6 926	26.6	1 794	24.6	378	20.1	9 098	25.8	36 525	23.2
\$500 to \$799	5 515	21.2	1 691	23.2	309	16.5	7 515	21.3	33 839	21.5
\$800 to \$1,199	4 558	17.5	1 454	19.9	415	22.1	6 427	18.2	29 201	18.6
\$1,200 or more	3 913	15.0	1 195	16.4	431	23.0	5 539	15.7	29 884	19.0
Total households(a)(b)	26 056	100.0	7 295	100.0	1 877	100.0	35 228	100.0	157 363	100.0

(a) Excludes households occupied by visitors only and households that could not be classified to a particular household type.

(b) Excludes all households where one or more persons aged 15 years or more did not state their income or were temporarily absent.

Source: ABS, 2001 Census.

2.7 Income *continued***Taxable income**

Over the past decade average annual taxable income for persons in the Cradle Coast Region Tasmania and Tasmania have been similar, although the average for the Region has tended to be slightly lower. However, in 1999–2000 average individual annual taxable income in the Region was above that for the state.

As with household incomes, average individual annual taxable income in the Lyell SSD has consistently been higher than the average for Tasmania and Australia over the past ten years. As mentioned earlier this is due to the much higher than average incomes earned by persons engaged in the mining sector. In 1999–2000 average annual taxable income in Lyell SSD was \$39,432, compared with \$31,410 for Tasmania and \$36,161 for Australia. For the Burnie–Devonport and North Western Rural SSDs average annual taxable income has generally been slightly lower than that for Tasmania. However in 1999–2000 average annual taxable income in the Burnie–Devonport SSD was \$317 above the average for Tasmania.

It should be noted that persons receiving income from Commonwealth pensions or benefits may not be included in these calculations as their incomes may not be taxable.

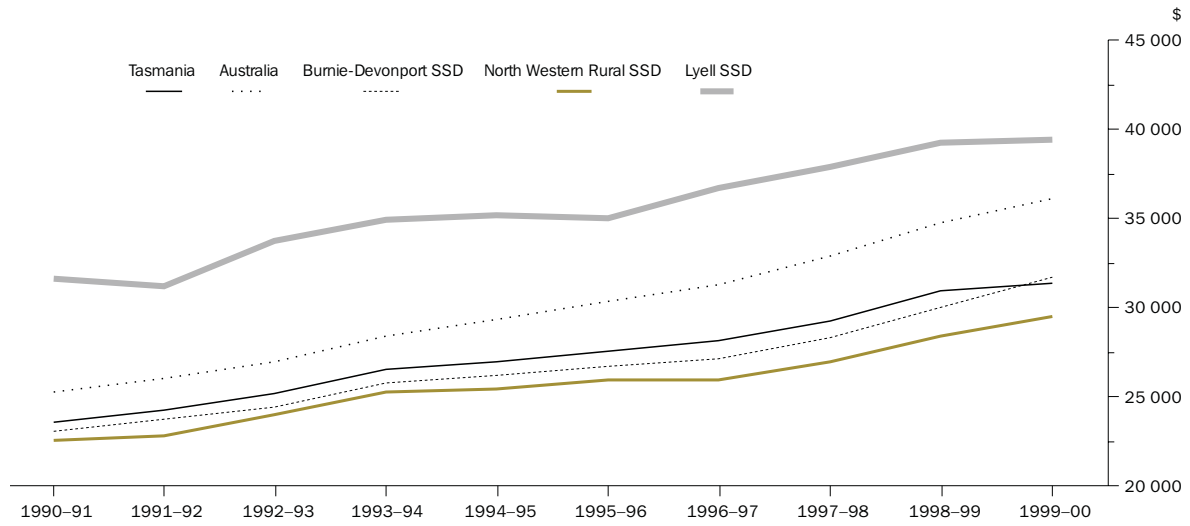
2.7.3 Average Individual Annual Taxable Income, SLAs, Cradle Coast Region Tasmania—1990–91 to 1999–2000

	1990–91	1991–92	1992–93	1993–94	1994–95	1995–96	1996–97	1997–98	1998–99	1999–00
	\$	\$	\$	\$	\$	\$	\$	\$	\$	\$
Burnie (C)–Part A	24 577	25 274	25 821	27 236	27 737	28 167	28 534	29 791	31 682	33 084
Central Coast (M)–Part A	22 141	22 772	23 704	25 075	25 583	25 903	26 366	27 295	29 303	30 881
Devonport (C)	22 615	23 296	24 120	25 442	25 937	26 277	26 845	28 208	29 632	31 717
Latrobe (M)–Part A	22 710	23 450	23 655	25 136	25 796	26 850	27 112	27 837	29 206	30 850
Waratah/Wynyard (M)–Part A	23 522	23 977	24 421	25 792	25 993	26 910	27 070	28 265	30 306	31 559
<i>Burnie–Devonport SSD</i>	23 106	23 749	24 421	25 794	26 268	26 765	27 181	28 329	30 065	31 727
Burnie (C)–Part B	26 476	27 581	28 950	29 296	28 442	28 614	27 693	29 668	30 344	32 536
Central Coast (M)–Part B	22 292	22 884	23 879	25 209	25 730	26 134	26 612	27 463	29 477	30 975
Circular Head (M)	22 340	22 170	23 875	25 236	25 558	26 228	25 932	26 682	27 870	28 435
Kentish (M)	20 639	21 393	21 864	23 458	24 068	24 485	24 784	25 929	27 379	28 978
King Island (M)	21 053	21 222	22 938	24 429	23 709	24 318	24 292	25 954	27 129	27 432
Latrobe (M)–Part B	22 728	23 369	23 654	25 160	25 774	26 939	27 153	27 781	29 221	30 870
Waratah/Wynyard (M)–Part B	24 212	24 860	25 507	26 518	26 169	26 989	27 081	28 318	30 205	31 390
<i>North Western Rural SSD</i>	22 544	22 870	24 029	25 287	25 457	25 995	25 941	27 018	28 448	29 534
West Coast (M)	31 665	31 189	33 761	34 954	35 191	35 003	36 737	37 947	39 288	39 432
<i>Lyell SSD</i>	31 665	31 189	33 761	34 954	35 191	35 003	36 737	37 947	39 288	39 432
Cradle Coast Region Tasmania	23 542	24 020	24 903	26 217	26 569	27 060	27 433	28 558	30 226	31 647
Tasmania	23 603	24 254	25 202	26 572	26 962	27 549	28 169	29 285	30 953	31 410
Australia	25 286	26 018	26 951	28 452	29 339	30 344	31 345	32 902	34 798	36 161

Source: Australian Taxation Office, Taxation Statistics.

2.7 Income *continued*

2.7.4 Average Individual Annual Taxable Income, SSDs, Cradle Coast Region Tasmania, Tasmania and Australia—1990–91 to 1999–2000



Source: Australian Taxation Office, *Taxation Statistics*.

2.8 Income support

Why is this important?

Information about the number and proportions of people receiving some form of income support from the Federal Government provide broad indicators of relative advantage or disadvantage in an area. High rates of income support (for example, more than 40% of the population aged 15 years and over) may indicate that an area is likely to be economically stressed. A high proportion of aged persons in an area may contribute to a high rate but will also indicate the level of financial resources available from such people in a region.

Table 2.8.1 shows the number of persons aged 15 years and over in the Cradle Coast Region Tasmania who were receiving Centrelink pensions and benefits as at June 2001. Across the Region 38.9% of persons were recipients of some form of income support. This was a higher proportion than for Tasmania as a whole where 36.1% of persons aged 15 years and over were Centrelink income support customers, and was considerably higher than the equivalent figure for Australia (27.2%). The Region's older age profile and higher unemployment levels are likely to be contributing factors to the relatively high proportion of people dependent on income support.

Of those persons in the Region receiving benefits, 36.2% were aged pension recipients while 16.5% were recipients of Newstart allowance.

The proportion of persons receiving Centrelink benefits and pensions was highest in the highly populated Burnie–Devonport SSD (40.7%), although high proportions were also observed in the non-metropolitan areas of the LGAs of Central Coast (M), Latrobe (M) and Waratah/Wynyard (M). The proportion of persons receiving Centrelink benefits and pensions was lowest in King Island (M) and Circular Head (M) (17.6% and 27.7% respectively).

Over the last ten years, the number of people in the Region receiving the aged pension and also the number of people receiving the disability support pension have both steadily increased while the number of people receiving Newstart allowance has declined.

- *In June 2001, around 39% of persons aged 15 years and over in the Region were recipients of Centrelink pensions or benefits, a higher rate than for Tasmania (36%).*

2.8 Income support *continued*

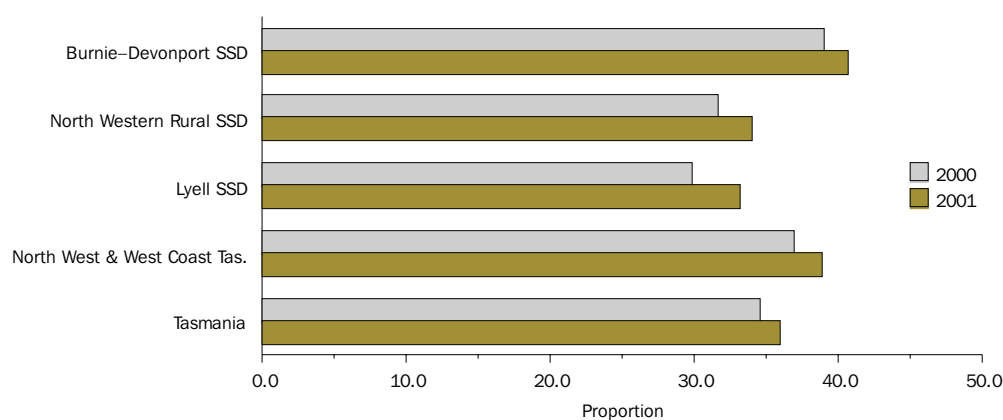
2.8.1 Centrelink Income Support Customers, SLAs, Cradle Coast Region Tasmania—June 2001

SLA	Aged pension recipients no.	Newstart allowance recipients no.	Disability support pension recipients no.	Other income support customers no.	Total Centrelink income support customers(a) no.	Total persons aged 15 years and over no.	Centrelink income support customers(a) as a proportion of persons aged 15 years and over %
Burnie (C)–Part A	1 868	925	1 030	1 691	5 514	13 217	41.7
Central Coast (M)–Part A	2 179	867	982	1 597	5 626	14 143	39.8
Devonport (C)	2 884	1 245	1 330	2 481	7 940	19 263	41.2
Latrobe (M)–Part A	981	379	382	700	2 441	5 992	40.7
Waratah/Wynyard (M)–Part A	1 260	528	616	1 003	3 408	8 565	39.8
<i>Burnie–Devonport SSD</i>	9 172	3 943	4 341	7 472	24 928	61 180	40.7
Burnie (C)–Part B	154	116	107	161	538	1 537	35.0
Central Coast (M)–Part B	385	157	177	285	1 005	2 407	41.8
Circular Head (M)	615	305	288	485	1 692	6 113	27.7
Kentish (M)	513	337	276	518	1 644	4 170	39.4
King Island (M)	108	30	40	64	242	1 378	17.6
Latrobe (M)–Part B	92	35	35	64	225	535	42.1
Waratah/Wynyard (M)–Part B	276	133	150	254	813	1 905	42.7
<i>North Western Rural SSD</i>	2 143	1 112	1 073	1 831	6 159	18 045	34.1
West Coast (M)	429	298	287	372	1 386	4 164	33.3
<i>Lyell SSD</i>	429	298	287	372	1 386	4 164	33.3
Cradle Coast Region Tasmania	11 744	5 353	5 701	9 675	32 473	83 389	38.9
Tasmania	48 679	21 729	22 429	41 659	134 496	372 714	36.1

(a) Includes all persons receiving Centrelink income support payments such as pensions and benefits. Specifically excludes those persons receiving only family allowance benefits, rent assistance and/or child care assistance.

Source: Department of Family and Community Services, *Centrelink Customers by Postcode*.

2.8.2 Centrelink Income Support Customers(a), Proportion of Persons Aged 15 years and Over, SSDs, Cradle Coast Region Tasmania—At June 2000 and 2001



(a) Includes all persons receiving Centrelink income support payments, such as pensions and benefits. Specifically excludes those persons receiving only family allowance benefits, rent assistance and/or child care assistance.

Source: Department of Family and Community Services, *Centrelink Customers by Postcode*.

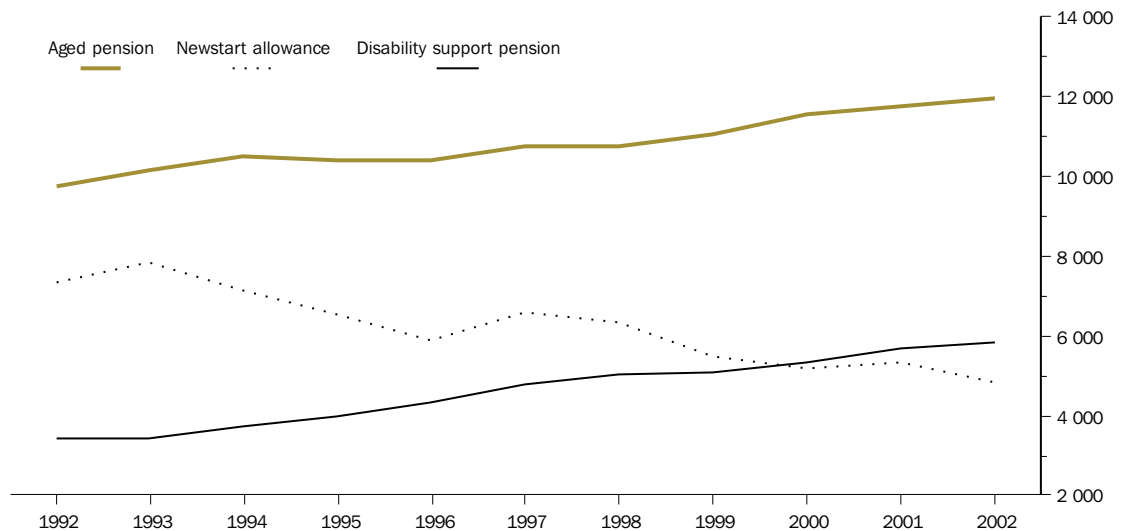
2.8 Income support *continued*

2.8.3 Selected Centrelink Income Support Customers, Cradle Coast Region Tasmania—June 1992 to June 2002

	1992	1993	1994	1995	1996	1997	1998	1999	2000	2001	2002
Aged pension	9 735	10 134	10 488	10 397	10 421	10 761	10 741	11 055	11 557	11 744	11 942
Newstart allowance	7 324	7 829	7 157	6 564	5 886	6 575	6 356	5 501	5 206	5 353	4 827
Disability support pension	3 422	3 442	3 741	3 994	4 348	4 781	5 037	5 104	5 356	5 701	5 818

Source: Department of Family and Community Services, *Centrelink Customers by Postcode*.

2.8.4 Selected Centrelink Income Support Customers, Cradle Coast Region Tasmania—June 1992 to 2002



Source: Department of Family and Community Services, *Centrelink Customers by Postcode*.

2.9 Youth

Why is this important?

It is important that young people are given every opportunity to reach their potential. In this section participation in school and post-school education and participation in employment are covered. These data are useful for assessing educational needs including employment training programs such as apprenticeships and assessing skills levels available for the labour force. Education and employment contributes to economic growth and improves social and individual wellbeing. Low rates of education participation can be indicators of disadvantage.

Table 2.9.1 and graphs 2.9.2 and 2.9.3 on the following pages show that at the 2001 Census the proportions of young people in the Region attending secondary school and TAFE were similar to the proportions for Tasmania as a whole, however the proportion attending university was low. The North-West Centre of the University of Tasmania was established in Burnie in 1995 and attracts several hundred students. However, many young people wishing to pursue a university education tend to relocate to Hobart and elsewhere and therefore would not be included in the data for Cradle Coast Region Tasmania, thus contributing to the apparent low proportion of university students.

Compared with the Tasmanian average there was a higher proportion of young people in the Region who were employed full time—both those aged 15–19 years and also those aged 20–24 years. Conversely, part-time employment was lower in both age groups.

At the time of the 2001 Census, 12.2% of persons aged 15–19 years were unemployed, while for the 20–24 year age group, 14.7% were unemployed. For both age groups this is a little above the proportion for Tasmania. It should be noted that these percentages are proportions of the total population of the particular age group and not unemployment rates which are the number of unemployed persons expressed as a proportion of the total labour force (i.e. employed plus unemployed persons).

Of concern is the relatively high proportion (16.3%) of the 20–24 year age group who are ‘disengaged’ from both the labour market and the education system, that is, they are neither in the labour force nor attending an educational institution. For Tasmania the corresponding proportion of ‘disengaged’ persons aged 20–24 was 12.4%, and for Australia 8.9%.

- *There is a relatively high proportion (16.3%) of persons aged 20–24 who are ‘disengaged’ from both the labour market and the education system. For Tasmania the equivalent proportion was 12.4% and for Australia 8.9%.*

2.9 Youth *continued*

2.9.1 Youth, Selected Characteristics, Cradle Coast Region Tasmania—1996 and 2001 Censuses

	1996 CENSUS.....				2001 CENSUS.....			
	Cradle Coast Region Tasmania		Tasmania		Cradle Coast Region Tasmania		Tasmania	
	no.	% of total age group	no.	% of total age group	no.	% of total age group	no.	% of total age group
AGED 15–19 YEARS								
Attending secondary school(a)	2 956	39.5	13 320	40.3	2 875	39.9	14 009	42.2
Attending TAFE(a)	1 180	15.8	4 283	13.0	1 309	18.1	5 056	15.2
Attending university(a)	101	1.4	2 475	7.5	179	2.5	2 523	7.6
Other institution or not stated	420	5.6	1 989	6.0	408	5.7	2 149	6.5
Employed full time	1 392	18.6	5 284	16.0	1 124	15.6	4 376	13.2
Employed part time(b)	1 437	19.2	6 918	20.9	1 620	22.5	7 961	24.0
Unemployed	867	11.6	3 705	11.2	878	12.2	3 452	10.4
Not attending AND not in labour force	384	5.1	1 582	4.8	385	5.3	1 706	5.1
Total aged 15–19(c)	7 480	..	33 041	..	7 213	..	33 209	..
AGED 20–24 YEARS								
Attending secondary school(a)	15	0.2	119	0.4	15	0.3	130	0.5
Attending TAFE(a)	389	6.0	1 922	6.1	385	7.3	1 926	7.1
Attending university(a)	155	2.4	4 400	14.1	190	3.6	4 603	17.0
Other institution or not stated	247	3.8	1 339	4.3	199	3.8	1 217	4.5
Employed full time	3 040	46.9	13 268	42.4	2 134	40.7	10 119	37.4
Employed part time(b)	1 144	17.6	6 409	20.5	1 144	21.8	6 660	24.6
Unemployed	948	14.6	4 083	13.1	772	14.7	3 475	12.8
Not attending AND not in labour force	1 017	15.7	3 835	12.3	854	16.3	3 357	12.4
Total aged 20–24(c)	6 482	..	31 282	..	5 248	..	27 078	..

(a) Includes external and correspondence students.

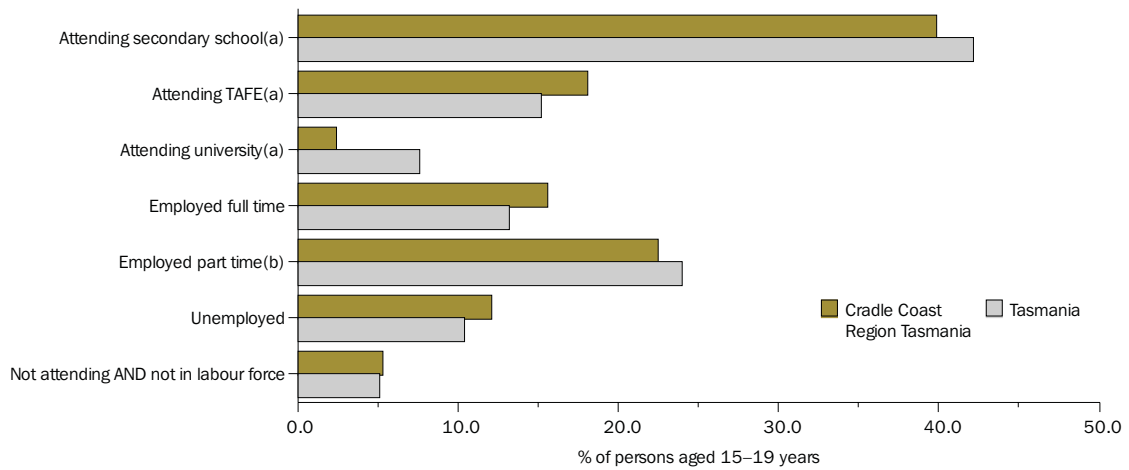
(b) Includes full-time/part-time status not stated.

(c) Components will not add to total as persons may be in more than one category.

Source: ABS, 1996 and 2001 Censuses.

2.9 Youth *continued*

2.9.2 Persons Aged 15–19 Years, Selected Characteristics, Cradle Coast Region Tasmania—2001 Census



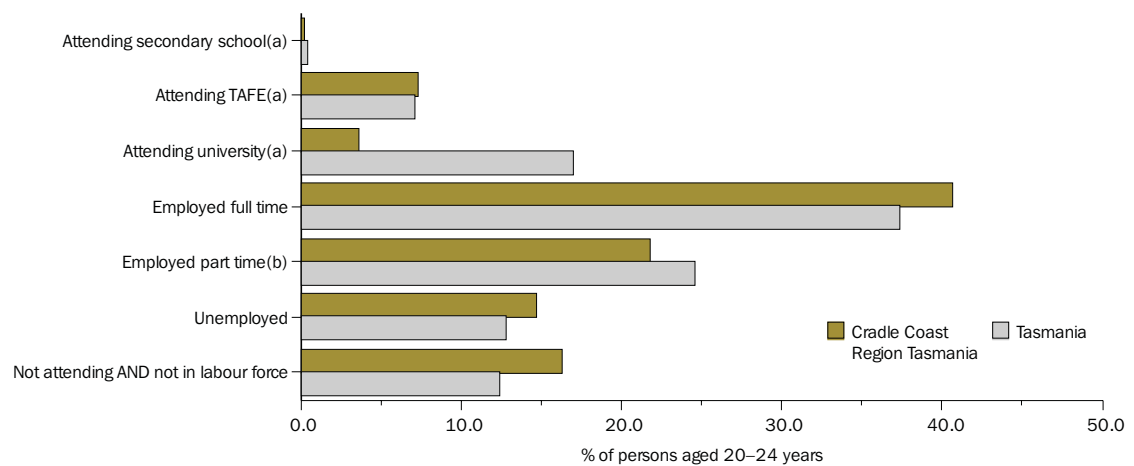
Note: Components will not add to 100% as persons may be in more than one category.

(a) Includes external and correspondence students.

(b) Includes 'hours worked not stated'.

Source: ABS, 2001 Census.

2.9.3 Persons Aged 20–24 Years, Selected Characteristics, Cradle Coast Region Tasmania—2001 Census



Note: Components will not add to 100% as persons may be in more than one category.

(a) Includes external and correspondence students.

(b) Includes 'hours worked not stated'.

Source: ABS, 2001 Census.

2.10 Socio-Economic Indexes for Areas (SEIFA)

Why is this important?

ABS Socio-Economic Indexes for Areas (SEIFA) have been derived to measure different aspects of social and economic conditions in Australia by geographic areas. They are indicators that can identify areas of relative socio-economic advantage or disadvantage. The Index selected for this 'Overview' is the Index of Relative Socio-Economic Disadvantage, the most commonly used SEIFA Index, which was derived from attributes such as low income, low educational attainment, high unemployment and jobs in relatively unskilled occupations.

ABS Socio-Economic Indexes for Areas (SEIFA) are currently based on the 1996 Census. SEIFA, using 2001 Census data, are expected to become available in November 2003.

The mean score for the Index of Relative Socio-Economic Disadvantage for Australia is 1,000. A score exceeding 1,000 indicates that an area is less disadvantaged than the Australian average, while a score of less than 1,000 indicates that an area is more disadvantaged than the Australian average.

It is important to note that the indexes are 'ordinal measures' and not 'interval measures'. That is, using the index to order areas is meaningful but other arithmetic relationships between index values are not meaningful. For example, an area with a score of 1,200 is not necessarily twice as advantaged as an area with a score of 600. Similarly, the socio-economic difference between two areas with index values of 800 and 900 is not necessarily the same as the difference between two areas with index values of 1,050 and 1,150. Therefore, the indexes should be used only for ordering or ranking areas.

The Index of Relative Socio-Economic Disadvantage score for the Cradle Coast Region Tasmania in 1996 was 945. In comparison the index for Tasmania as a whole was 974. With an average score of 1,000 for Australia, this indicates that Tasmania is more disadvantaged than the Australian average and the Region more disadvantaged than both the state and Australia.

Within the Region, at the statistical subdivision level, the highly populated Burnie–Devonport area was more disadvantaged than the agricultural North Western Rural SSD and the mining region of the west coast (Lyell SSD). At the SLA level the rural parts of the Burnie and Latrobe council areas (i.e. Burnie (C)–Part B and Latrobe (M)–Part B) were the least disadvantaged areas across the Region and both of these had index scores slightly above the Australian average. All SLAs in the North Western Rural SSD, apart from the municipalities of Circular Head and Kentish, had index scores above the state average. Of all SLAs in the Region the urban area and immediate surrounds of Burnie (i.e. Burnie (C)–Part A) was the most disadvantaged SLA with a score of 926 ranked slightly below Devonport (C) with 930.

Table 2.10.1 also shows the Index of Relative Socio-Economic Disadvantage scores for many of the towns and urban centres throughout the Region. These data show that, while a larger district may be more disadvantaged overall, there are some towns within the district that are less disadvantaged than others. For example, in the Burnie–Devonport SSD several small townships had index scores above the Australian average, these being Forth (1,071), Leith (1,049) and Gawler (1,004). The most disadvantaged town in the Region in 1996 was Railton with an index score of 857. Waratah (881) and Tullah (888) were also more disadvantaged than other townships.

In general the larger towns on the North West Coast had comparatively low SEIFA scores (i.e. Burnie–Somerset (920), Devonport (922), Ulverstone (924) and Wynyard (906).

Map 2.10.2 indicates that most rural agricultural areas tended to be less disadvantaged than the urban areas.

2.10 Socio-Economic Indexes for Areas (SEIFA) *continued*

2.10.1 Index of Relative Socio-Economic Disadvantage, SLAs and Urban Centres/Localities, Cradle Coast Region Tasmania—1996 Census

	<i>Index no.</i>		<i>Index no.</i>
SLAs, Region, Tasmania and Australia		Urban Centres and Localities	
Burnie (C)–Part A	925.82	<i>Burnie–Devonport SSD</i>	
Central Coast (M)–Part A	948.79	Burnie–Somerset	919.89
Devonport (C)	930.25	Devonport	921.74
Latrobe (M)–Part A	957.47	Forth	1 071.07
Waratah/Wynyard (M)–Part A	943.06	Gawler	1 004.25
<i>Burnie–Devonport SSD</i>	937.76	Heybridge	903.67
		Latrobe	911.39
Burnie (C)–Part B	1 001.73	Leith	1 049.20
Central Coast (M)–Part B	998.64	Penguin	932.59
Circular Head (M)	950.24	Port Sorell	958.08
Kentish (M)	938.67	Sisters Beach	996.67
King Island (M)	999.04	Sulphur Creek	982.39
Latrobe (M)–Part B	1 008.65	Turners Beach	995.79
Waratah/Wynyard (M)–Part B	984.30	Ulverstone	924.30
<i>North Western Rural SSD</i>	967.86	Wynyard	905.55
West Coast (M)	953.35	<i>North Western Rural SSD</i>	
<i>Lylell SSD</i>	953.35	Currie	976.14
		Railton	857.42
Cradle Coast Region Tasmania	945.48	Ridgley	966.63
		Savage River	1 010.91
Tasmania	974.00	Sheffield	905.26
		Smithton	914.75
Australia	1 000.00	Stanley	902.62
		Waratah	880.68
		<i>Lylell SSD</i>	
		Queenstown	953.59
		Rosebery	973.45
		Strahan	939.64
		Tullah	888.47
		Zeehan	961.16

Source: ABS, SEIFA, 1996 Census.