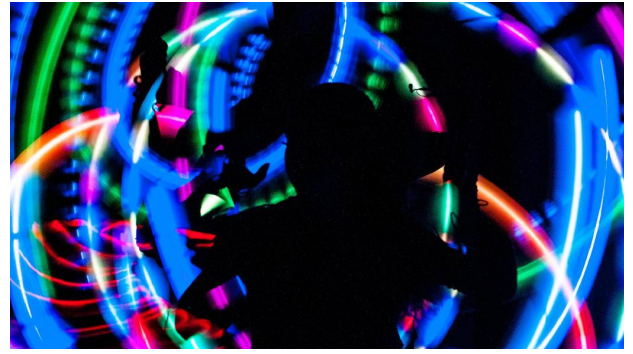


SLIPSTREAM CIRCUS BUILDING

New purpose-built facility



Slipstream Circus is Tasmania's largest circus organisation, providing a safe professional environment for participants to develop a range of performance skills and perform locally. Participation in circus has shown to benefit academic and social development, and build confidence for future public life.

This project will:

- Build a fit for purpose, circus focused performing arts training space.
- Fill a current gap for community, professional and educational groups.
- Offer flexibility for use by many performing arts and community groups on the Northwest coast of Tasmania.
- Enable the Slipstream Circus to expand and diversify their offering.
- Free up space in their existing accommodation at the Ulverstone basketball stadium.
- Provide suitable access for people with disabilities and address current structural limitations.

A dedicated circus training and performance space will enable circus training to flourish and expand in scope for trainers and participants – including student members, schools, community groups, professional artists disability groups, disengaged at risk children and young people.

KEY BENEFITS:

- Create a larger space that is structurally suitable with appropriate disability access
- Opportunity for expansion that will create economies of scale.
- Increased opportunities for participation.
- Meet the demands of growing popularity of this activity.

To find out more information on this project visit: www.slipstreamcircus.org.au

REQUEST:

\$3 mil

